



FMPDR12W21C
Flush Mount Slim Panel Downlight 12" 21W 5CCT

Replaces/Remplace 150w
Uses/Les usages 21w*

1500 LUMENS

5 Selectable Color Temperatures



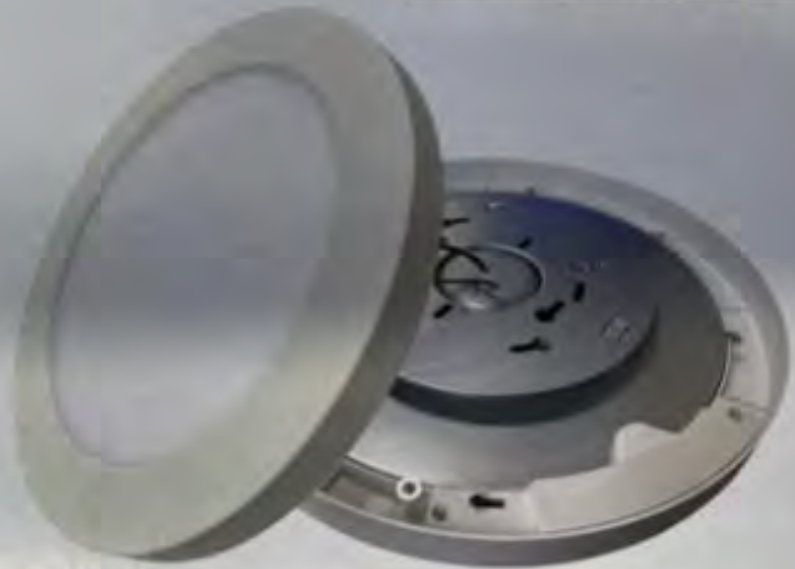
Hi-Performance LED

UP TO US\$500 SAVINGS	120° Beam Angle	120V Voltage	21W Power Consumption
------------------------------------	------------------------------	------------------------	------------------------------------



50,000 HOURS		80 CRI	12 INCH
------------------------	--	------------------	-------------------

- Size: 12 inch
- 50,000h Lifetime**
- Dimmable (Phase-cut)**
- Installation Through Plug in Adapter
- Indoor / Outdoor use†



5 SELECTABLE COLORS
Back switch adjustment

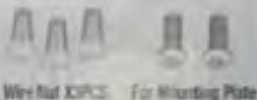
WARNING

Risk of electrical shock. Disconnect power at fuse or circuit breaker before installing or servicing.
To prevent early lamp failure, lamp should only be installed in operating environments ranging between -25°C and $+40^{\circ}\text{C}$ (-4°F and $+104^{\circ}\text{F}$).
To prevent overheating do not install in totally enclosed recessed fixtures.
No user serviceable parts inside. To avoid electrical shock do not disassemble product.
This product is not intended for use in emergency light fixtures or exit signs.
Covered ceiling mount only.
Risk of fire or electrical shock. Install this kit only in luminaires that have the construction features and dimensions shown in the photographs and/or drawings.
Do not make or alter any open holes in an enclosure of wiring or electrical components during kit installation.
To prevent wiring damage or abrasion, do not expose wiring to edges of steel metal or other sharp objects.
Installation should be performed only by a qualified electrician.

CAUTION

Turn power off before inspection, installation or removal.
Suitable for use in dry and wet indoor and outdoor locations. Use only on 120 VAC, 60Hz circuits.
This device complies with Part 15 of the FCC rules and has been tested and found to comply with the limits for a Class B digital device. These limits are designed to provide reasonable protection against harmful interference in a residential installation. This equipment generates, uses, and can radiate radio frequency energy and, if not installed and used in accordance with the instructions, may cause harmful interference to radio communications.

Accessories



Wire Nut KPC- For Mounting Plate



Mounting Plate

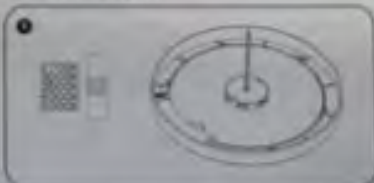
SIZE

Flush Mount Slim Panel Downlight 12" x 18"



Surface mounting installation:

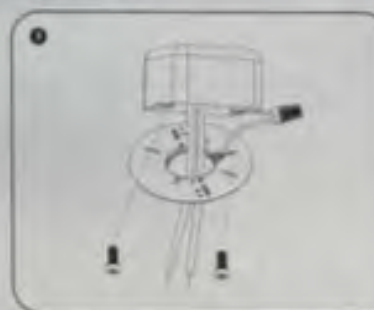
Step 1: Selecting the correct Color Temperature (CT).
Select compatible LED lamp (LED) by using the vectors either 2700K, 3000K, 3500K, 4000K, or 5000K.



Step 2: Preparing the Mounting Plate.
Choose the mounting plate holes compatible with your junction box.



Step 3: Making the ground wiring connections.
Connect the ground wire (green wire attached to the mounting plate) to the ground wire in the junction box using the included wire nuts.



Step 4: Making the Wiring Connections.
Using the included wire nuts (W), connect the black wire to the hot supply wire and connect the white wire to the supply neutral wire.



Step 5: Inserting the Mounting Plate.
Align the appropriate holes in the mounting plate with the holes in the junction box. Using the screws, attach the mounting plate to the junction box. Tighten the screws with the provided screw driver with the ceiling.



Step 6: Attaching the LED fixture to the Junction Box.
Push the LED fixture into the mounting plate and make sure the LED fixture is fully secured before releasing.

